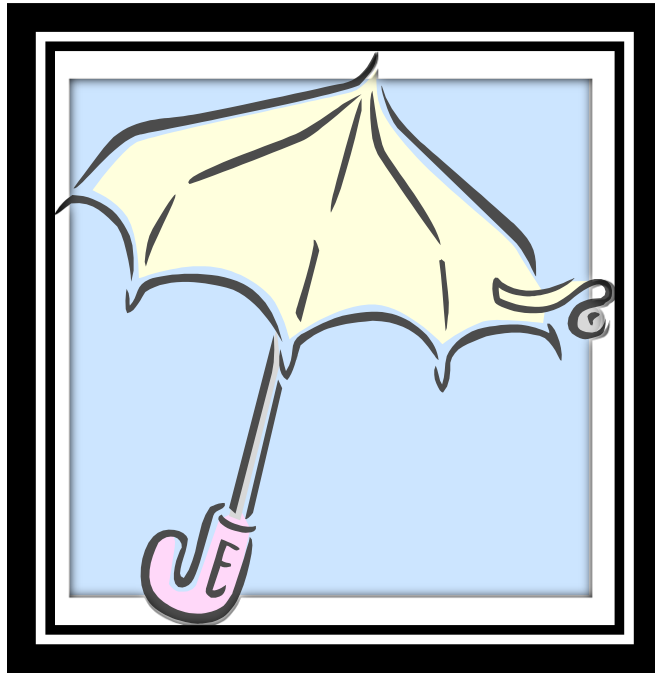


List of Central Ohio Homeless Shelters



Homeless shelters provide a place for someone to spend the night. Usually the person must leave the shelter during the day.

Homeless Shelters in Central Ohio

Delaware County

- Faith Promise Family Shelter
Delaware, OH, 740-362-7817
Serves families

Fairfield County

- Fairfield County Emergency Shelter
Faith Housing of Fairfield County
1681 E. Main St.
Lancaster OH 43130-5266, 740-653-2012
Serves adult females and males
- The Foundation Shelter
800 W. Sixth Avenue
Lancaster, Ohio 43130, 740-653-1960 (night)
740-503-2381 (day)
Serves men, women and women with children
- Lancaster-Fairfield County Community Action (CA)
Emergency Homeless Shelter
1743 East Main Street
Lancaster, OH 43130, 740-653-4146
Serves eligible homeless families with children only-no single adults.

Fayette County

Community Action Commission of Fayette County
320 Hinde Street
Washington Court House, Ohio 43160, 740-333-7580
Serves families including single women, children, couples with children, and single parent families.

Franklin County

There are a number of shelters in Franklin County for men, women and families.

Referrals for single adults are made through HandsOn Central Ohio at 888-474-3587.

Referrals for family shelters can be obtained by calling 211.

Licking County

- St. Vincent DePaul Haven
135 Wilson St.
Newark, OH 43055, 740-670-0822
Serves men.
- Salvation Army of Licking County
250 East Main Street
Newark, OH 43058, 740-345-8120
Serves men, women and families.

Madison County

Madison County Emergency Shelter
1038 Rt. 38, London, OH, Call 740-852-3511 for a referral.

Pickaway County

Circle of Light Emergency Shelter
2146 North court Street
Circleville OH 43113, 614-980-5788, www.thecircleshelter.org

Union County

None